

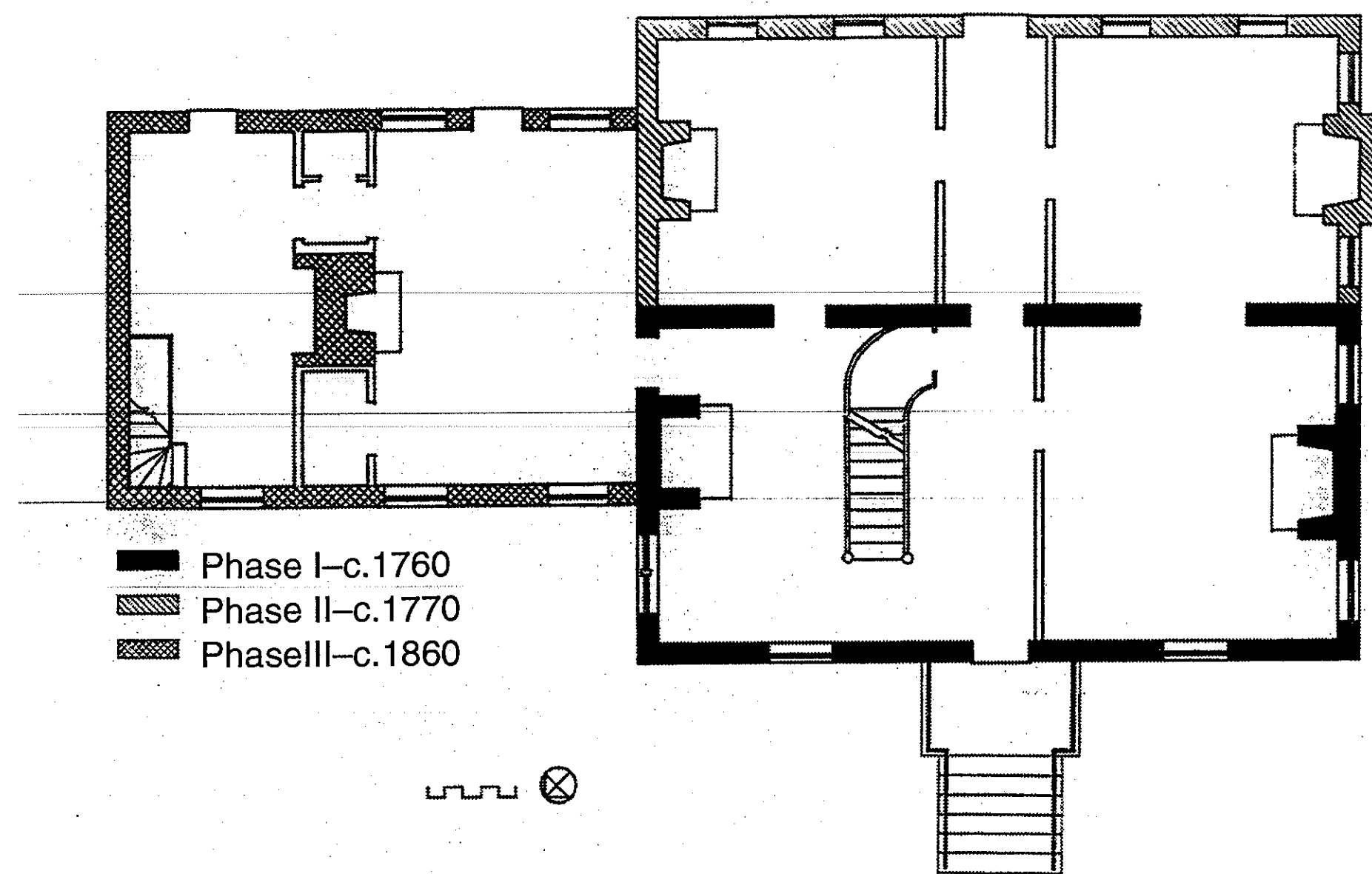


201 N WATER ST WITH WRAP-AROUND PORCH ca 1967

THE DELICACY OF THESE PORCH COLUMNS MAKES THIS PORCH SEEM MORE 1900-ISH THAN 1860s ITALIANATE. DOES IT DATE FROM YET ANOTHER CONSTRUCTION PERIOD? IS IT COLONIAL REVIVAL? IS IT A REMODELING OF AN EARLIER PORCH? WE DON'T KNOW.



1860s CORNICE FROM SW



BUILDING PHASES PER MICHAEL BOURNE

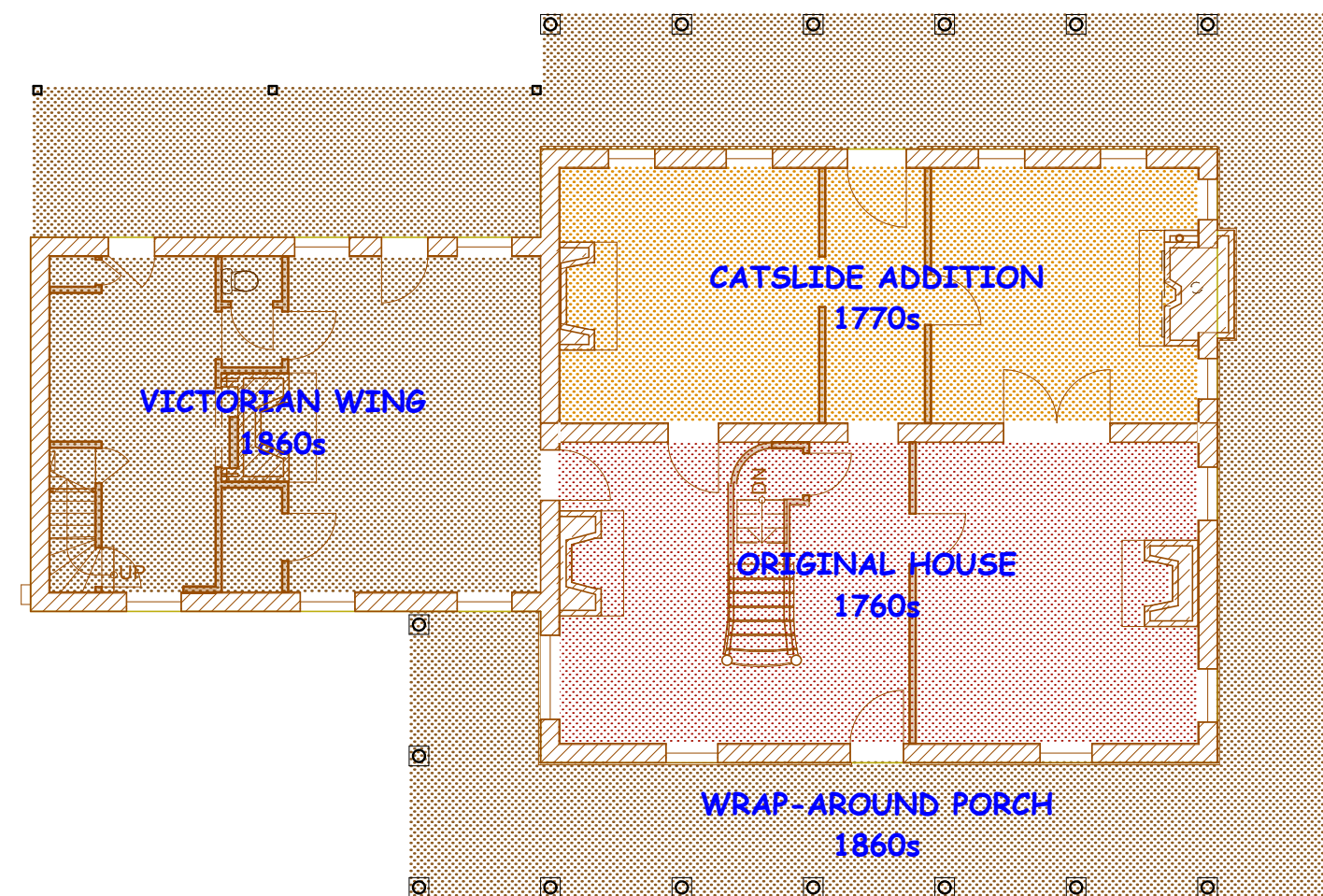
SMITH-RINGGOLD IN THE VICTORIAN ERA

The Smith-Ringgold House is a product of three different building periods, culminating in an extensive remodeling in the second half of the 19th Century. The Victorians favored variety in form, contrasts of light and dark, and a picturesque appearance overall. In Smith-Ringgold's case, these were achieved, as follows:

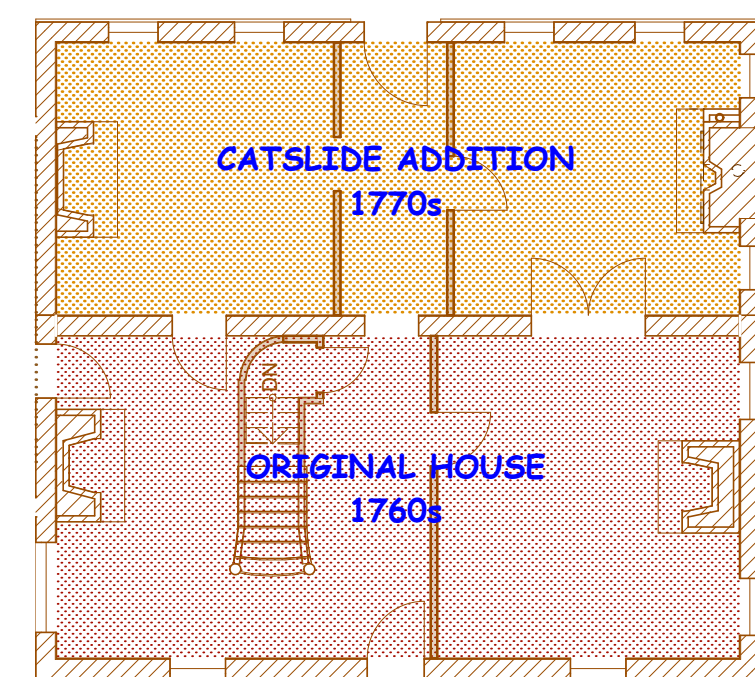
- At the edge of the roof, elaborate cornices were added to decorate the roof edge and cast deep shadows on the walls.
- A wrap-around veranda was added with columns to provide lots of outdoor space for socializing and summer shade for the interiors.
- Hoods were added over the windows and doors to give them more character (variety in form and shadow).
- The whole house was finished white. (Victorians often considered unfinished brickwork crude.)
- A substantial kitchen wing was added, which provided a Dining Room and work spaces for the servants.



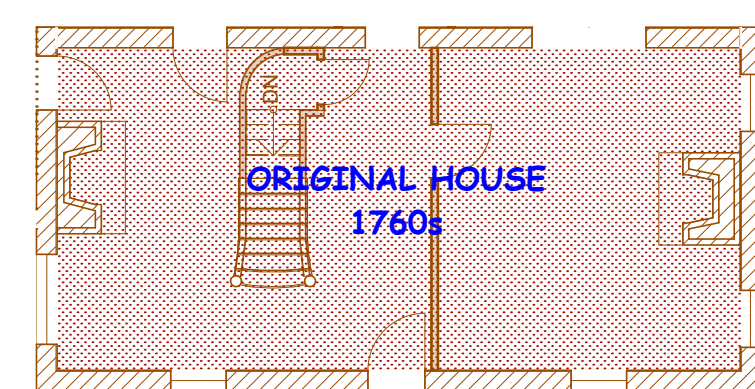
SMITH-RINGGOLD BEFORE 1968



P3 PHASE III - VICTORIAN 1860-1968
SCALE: 3/32" = 1'-0"



P2 PHASE II - CATSLIDE 1770-1860
SCALE: 3/32" = 1'-0"



P1 PHASE I - ORIGINAL 1760-1770
SCALE: 3/32" = 1'-0"



WATER STREET VIEW - SEPT 1967



1860s WING WITH PORCH - SEPT 1967



VIEW FROM INTERSECTION - DEC 1974

SMITH-RINGGOLD GOES GEORGIAN

In the 1970s a decision was made to "restore" the Smith-Ringgold House as an 18th Century house:

- All of the porches were removed.
- The stucco was stripped from the 1860s wing.
- The white finishes were removed from all of the brick walls.
- The Victorian hoods were removed from the windows.
- "Georgian" stoops were built at all four exterior doors.

THE 1860S WINDOW HOODS WERE REMOVED AFTER THIS PHOTO

THE FRONT STOOP WAS BUILT AFTER THIS PHOTO



FROM SW DURING CONSTRUCTION - Ca 1973



THE RIVERSIDE VIEW - DEC 1974

← THE 1860S PLASTER HAS BEEN REMOVED FROM THE 1860S WING

→ ABOVE THE DEMOLISHED PORCH THE BRICK WALLS ARE WHITE BUT MORE WEATHERED

→ PORCH FLASHING LINE (JOINT)

→ 1860s WINDOW HOODS REMOVED BY 1974

→ BELOW THE DEMOLISHED PORCH THE WALL MORE CLEARLY SHOWS ITS WHITE (VICTORIAN) FINISH

→ THE NEW FRONT STOOP IS UNDER CONSTRUCTION

→ WAS THE STONE FOUNDATION (UNDER THE PORCH) FINISHED WHITE?



WATER ST VIEW DURING CONSTRUCTION - Ca 1974



EAVE EXTENSION AT 1770s RIVERSIDE WALL
AN 1860s ITALIANATE CORNICE, ON A 1770s ADDITION (AS SEEN FROM THE 1860s BEDROOM).

NOTE THE ORIGINAL 1770s STOOP HAD BENCHES WITH PITCHED BOARD BACKS ON BOTH SIDES OF THE DOOR. THE ENDS OF THESE BACKS ARE STILL TO BE FOUND EMBEDDED IN THE 1770s BRICK WALLS (NEAR THE BOTTOM CORNERS OF THE TWO FLANKING SHUTTERS).



RIVERFRONT ENTRY 'AS IS'
AN 1860s ITALIANATE ARCHITRAVE ON AN 18TH CENTURY ADDITION WITH A 1974 "GEORGIAN" STOOP

REFLECTING SOCIAL ASPIRATIONS, LOCAL ECONOMICS, AND LIFE STYLE CHOICES, SMITH-RINGGOLD'S ECLECTICISM IS A RICH AND QUIRKY HISTORY OF WHAT DIFFERENT OWNERS WANTED FOR THEMSELVES IN SUCCESSIVE ERAS



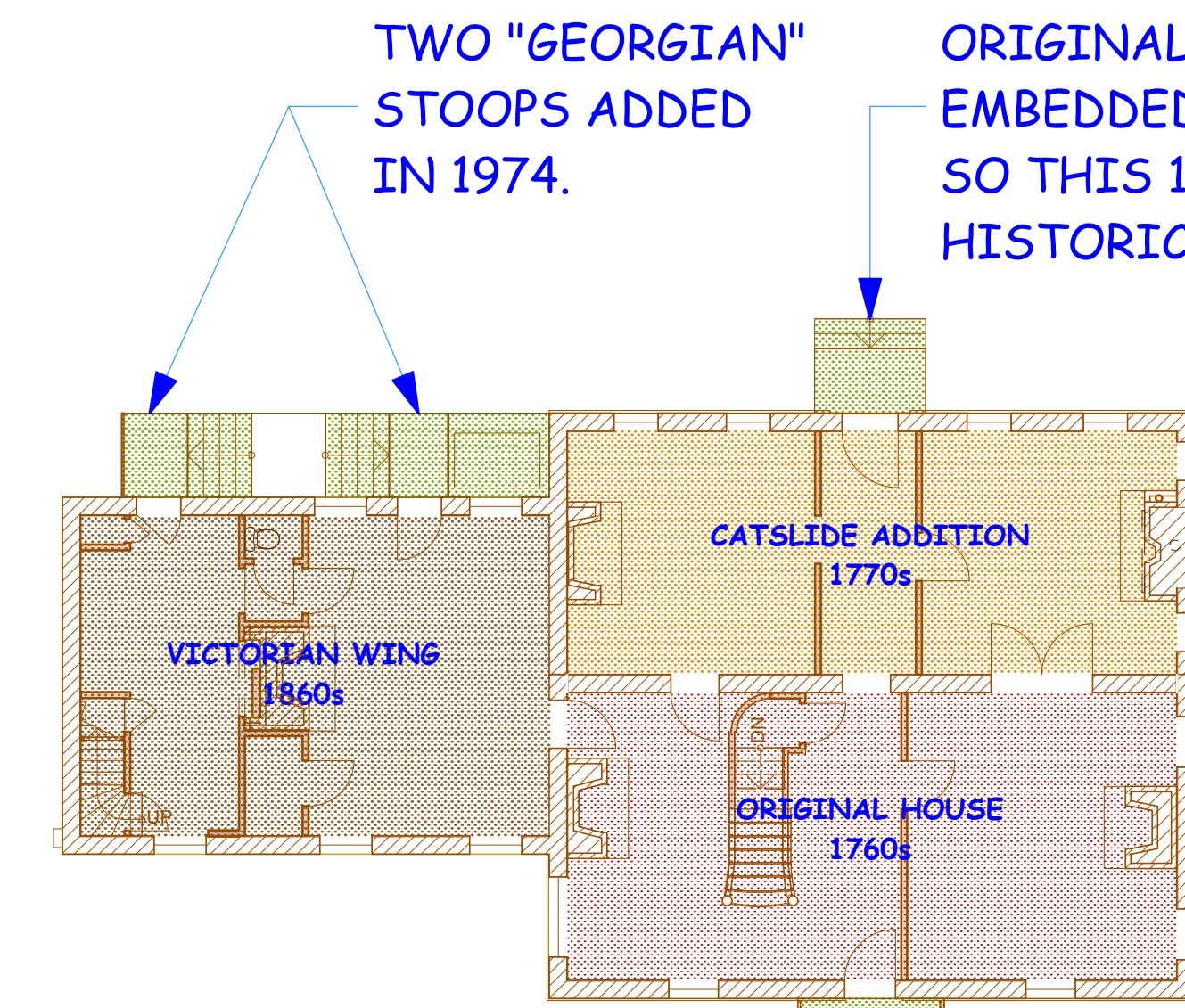
1860s CORNICE FROM WATER ST
AN 1860s ITALIANATE CORNICE ON A 1760s GEORGIAN HOUSE
THE ORIGINAL 1760s VERGEBOARD?



WATER STREET ENTRY 'AS IS'
AN 1860s ITALIANATE ARCHITRAVE ON A 1760s GEORGIAN HOUSE WITH A 1974 "GEORGIAN" STOOP



HE RIVERSIDE (EAST) ELEV
SCALE: 1/8" = 1'-0"



P4 PLAN OF PHASES I THRU IV
SCALE: 3/32" = 1'-0"



HW WATER ST (WEST) ELEV
SCALE: 1/8" = 1'-0"

IT SEEMS LIKELY THE 1974 "GEORGIAN" STOOP WAS DESIGNED TO FIT THE 1860s ITALIANATE ARCHITRAVE. WE DON'T KNOW.

AN ECLECTIC OUTCOME

SMITH - RINGGOLD HOUSE
201 North Water Street, Chestertown MD 21620

Chesapeake Architects Inc
104 Church Alley, Chestertown, Maryland 21620
Email: ChesArch@chesarch.com 410 778 4899 / FAX 2179
www.ChesArch.com

PROJECT 1122
Copyright 2011 Chesapeake Associated Architects, Inc. All rights reserved.

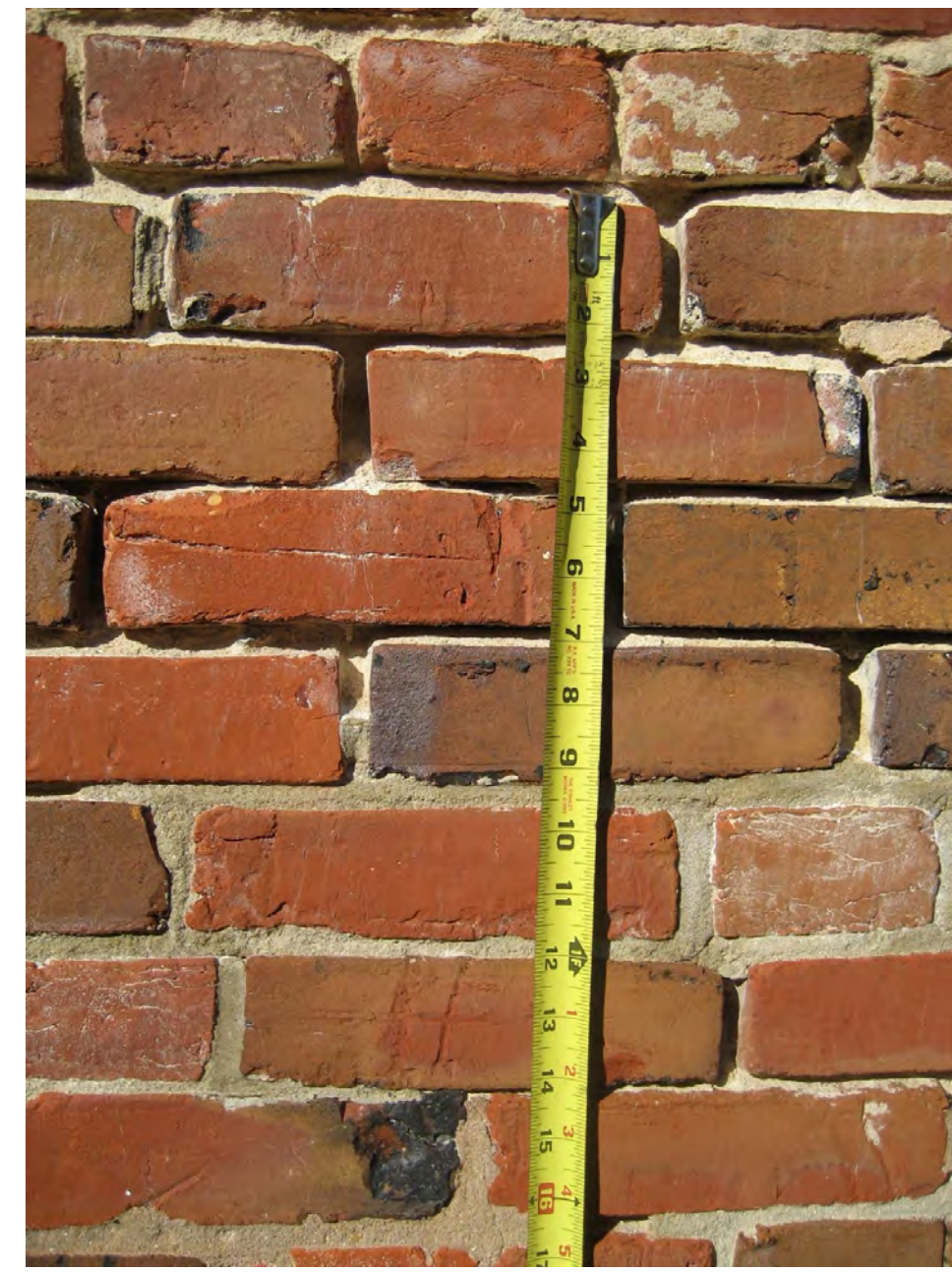
FOR HDC PERMITTING

PROJECT NORTH



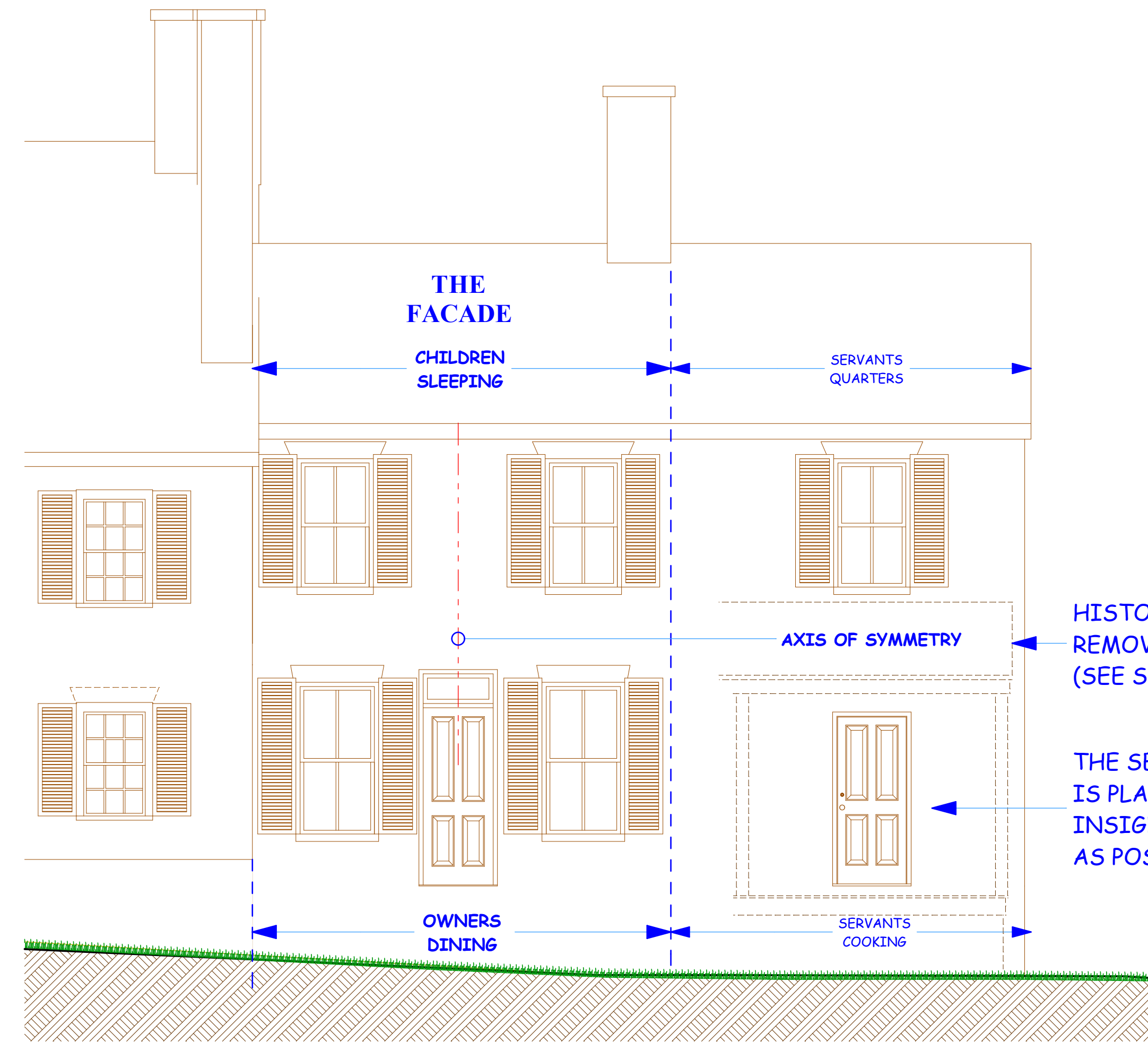
1860s WING FROM RIVERSIDE

THIS 1860s WING HAS BEEN MADE TO SEEM "GEORGIAN" BY REMOVING ITS PORCH, REMOVING ITS PLASTER, AND THE ADDITION OF "GEORGIAN" STOOPS. HOWEVER, THE SYMMETRY THESE STOOPS SET UP DOES NOT FIT VERY WELL WITH THE DESIGN OF THE 1860s WING.

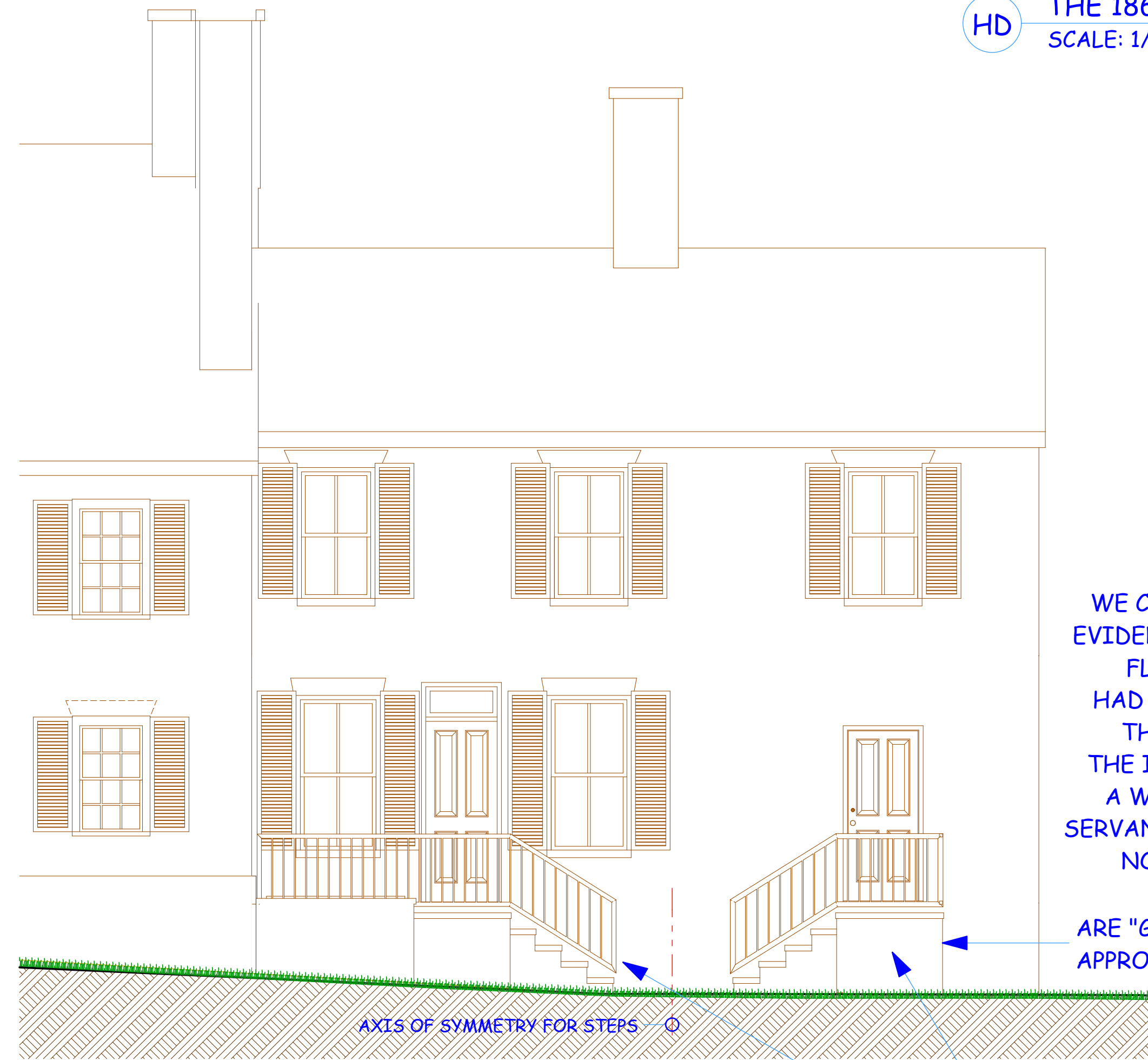


BRICK COURSING OF 1860s WING

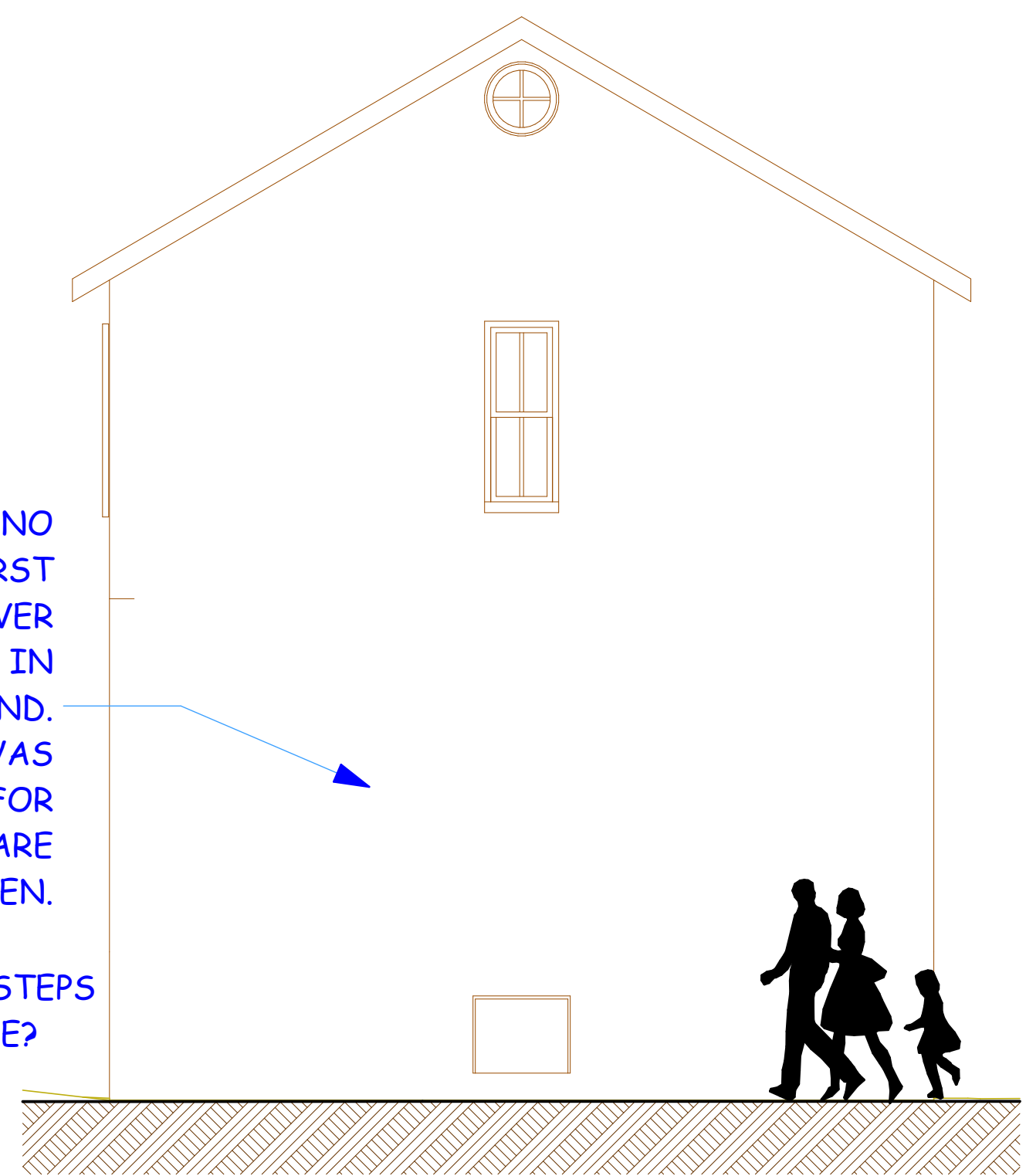
WHEN BUILT IN THE 1860s, THE BRICK JOINTS WERE NOT POINTED. THEY WERE INTENDED TO BE PROTECTED BY THE STUCCO (REMOVED IN 1974).



HD THE 1860's HISTORIC DESIGN
SCALE: 1/4" = 1'-0"



HW 1860s WING WITH STEPS
SCALE: 1/4" = 1'-0"



HN THE 1860s GABLE END (NORTH)
SCALE: 1/4" = 1'-0"

THESE (2) SETS OF 1974 STAIRS ARE PROPOSED TO BE DEMOLISHED TO MAKE WAY FOR THE NEW ADDITIONS.



STEPS TO DINING ROOM

THE BULKHEAD DOOR (WOOD) IS DIRECTLY BELOW THE ROOF'S EAVE, SUBJECTING IT TO BEING DRENCHED IN EVERY STORM. AS A RESULT WE FOUND ROT AND TERMITE DAMAGE IN THIS CORNER OF THE BASEMENT.



STEPS TO KITCHEN

SETTLING HAS CAUSED BOTH SETS OF 1974 STEPS TO MOVE AWAY FROM THE BRICK 1860s WALLS, AND THEY WILL CONTINUE TO SETTLE, REQUIRING REPEATED RE-POINTING OF THE JOINT BETWEEN THE STEPS AND THE BRICK WALLS. THE GOOD NEWS IS THESE "GEORGIAN" STOOPS CAN BE REMOVED WITH LITTLE RISK TO THE HISTORIC MASONRY.



THE RIVERSCAPE FROM THE BRIDGE 'AS IS'

← ALONG THE 200-BLOCK OF WATER STREET, MOST OF THE HOUSES HAVE RIVER-ORIENTED PORCHES.



THE RIVERSCAPE WITH ADDITIONS

← COMPARED WITH ITS NEIGHBORS, THE SMITH-RINGGOLD HOUSE IS RELATIVELY LARGE, AND ITS PROPOSED ADDITIONS RELATIVELY MODEST.

THE RIVERSCAPE COMPARED

FOR HDC PERMITTING

SMITH - RINGGOLD HOUSE

201 North Water Street, Chestertown MD 21620

Chesapeake Architects Inc

104 Church Alley, Chestertown, Maryland, 21620

Email: ChesArch@chesarch.com 410 778 4899 / FAX 2179

www.ChesArch.com

PROJECT 1122

Copyright 2011 Chesapeake Associated Architects, Inc. All rights reserved.

PROJECT NORTH

DATE: 25 JAN 12

SCALE: AS NOTED

BY: PCN

REVISED:

H

5